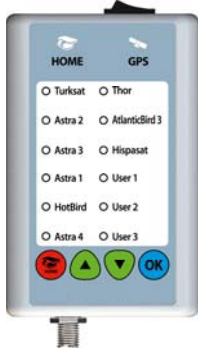




# **SNIPE** series

## **Upgrade manual**



# Models of controller type

	Controller type A	Controller type B	Controller type C
			
<b>SNIPE</b>	<b>O</b>		
<b>SNIPE PRO</b>		<b>O</b>	<b>O</b>
<b>SNIPE PRO MAX</b>		<b>O</b>	<b>O</b>
<b>SNIPE DOME</b>	<b>O</b>		
<b>SNIPE2</b>			<b>O</b>
<b>SNIPE Air</b>			<b>O</b>
<b>SNIPE DOME Air</b>		<b>O</b>	

※ For the models have two types of controller, see image and select the correct type.

# Contents

<b>Controller type A</b> .....	4
<b>Controller type B</b> .....	9
<b>Controller type C</b> .....	14

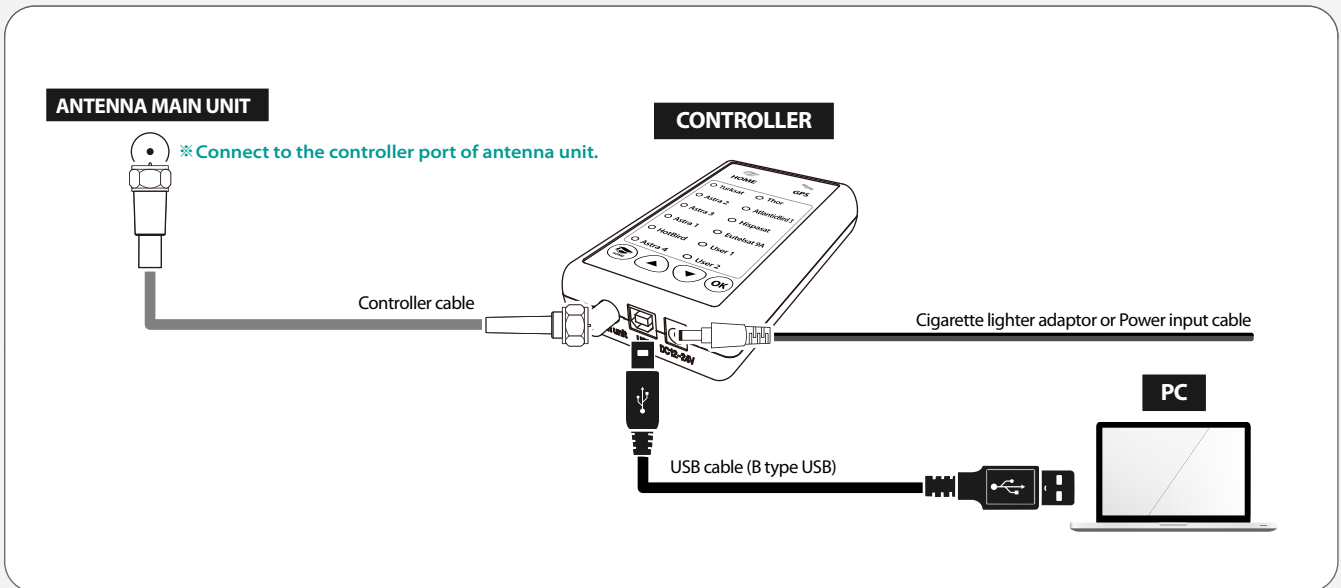
## Note

- ※ **Incorrect file download may cause upgrade failure so make sure to download the correct file belongs to using antenna model. (Especially SNIPE and SNIPE DOME require different upgrade file and satellite data despite of using the same controller type(A).)**
- ※ **For controller type A/B, antenna to controller connection is the same as normal operation. Just add proper type of USB cable from controller to PC.**
- ※ **For controller type C, only controller with power is required. Disconnection the controller from the antenna unit is recommended. Since type C provides a different way of upgrade using USB, upgrade file has all relevant data including satellite, so no need other downloads except upgrade file.**

**NOTE**  
Please read this upgrade manual thoughtfully before preceding the upgrade process.

## 1 Preparation

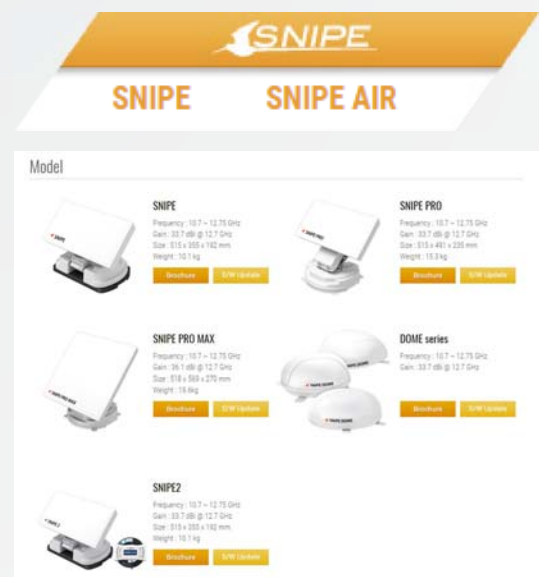
※ Upgrade process has to be started when the main unit is at HOME position.



01. Make sure that HOME LED is lit and the antenna is at HOME position
02. Connect [Antenna - Controller - PC] as the image provided

## 2 Download the upgrade program

01. Visit SELFSAT website (<http://www.selfsat.com>) and click SNIPE category at main page
02. Scroll down to the bottom to find upgrade chapter
03. Click [S/W upgrade] of the model



#### 04. Download related programs

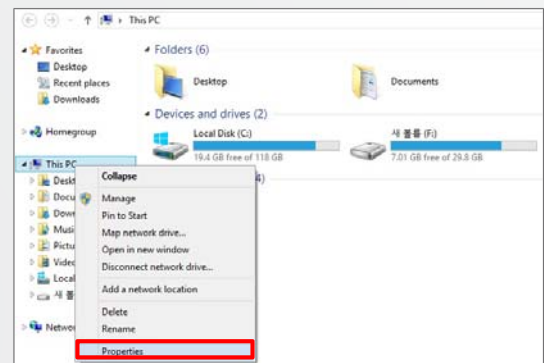
- [Upgrade program]
- [Satellite data]

Model	Upgrade file	Upgrade manual	Europe Satellite data
SNIFE	<a href="#">Download</a>	<a href="#">Download</a>	<a href="#">Download</a>
SNIFE PRO	<a href="#">Download</a>	<a href="#">Download</a>	<a href="#">Download</a>
SNIFE PRO MAX	<a href="#">Download</a>	<a href="#">Download</a>	<a href="#">Download</a>
SNIFE DOME	<a href="#">Download</a>	<a href="#">Download</a>	<a href="#">Download</a>
SNIFE2	<a href="#">Download</a>	<a href="#">Download</a>	
SNIFE AIR	<a href="#">Download</a>	<a href="#">Download</a>	
SNIFE DOME AIR	<a href="#">Download</a>	<a href="#">Download</a>	<a href="#">Download</a>
USB driver file	<a href="#">Download</a>		

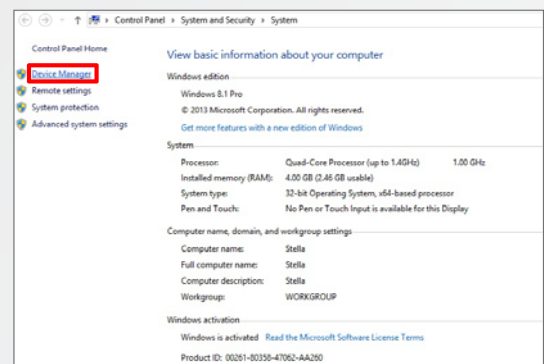
#### 05. Activate USB drive port

- ① Turn on the controller and wait for a while during PC recognize new driver itself  
(In general, PC recognizes new device(USB) and installs driver automatically)

- ② Open and right click [My computer] and then go to [Properties]

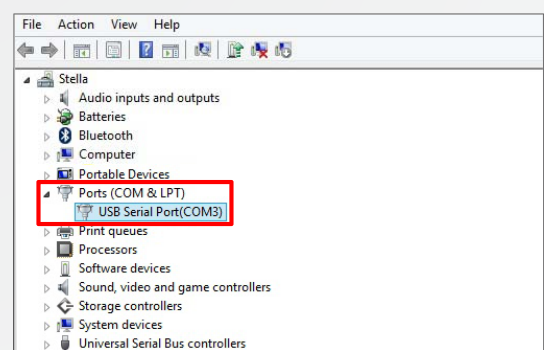


- ③ Click [Device manager] (or Storage manager) on the left top



- ④ Click left button of [Port(COM & LPT)] to see subfolders

- ⑤ Check if [USB Serial Port] is activated



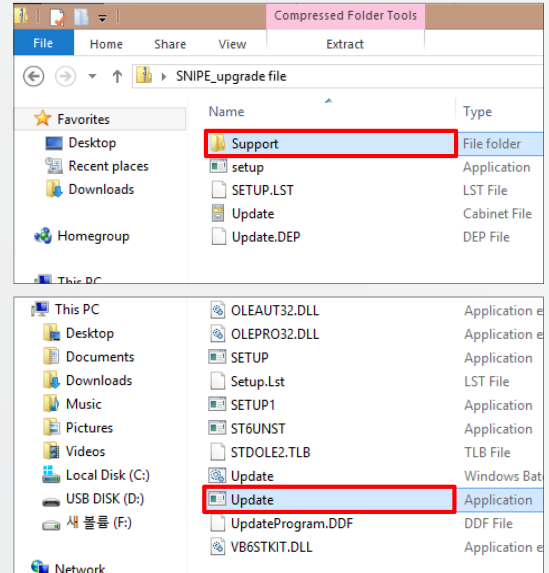
- ⑥ If [USB Serial Port] is not activated, follow (i) or (ii)
  - i. Repeat to plug out USB cable and plug into PC till PC recognize USB properly  
(Reinforced security system of PC may block new USB)
  - ii. Download and install [USB drive file] from website and repeat [05.①~⑤]

# 3

## Proceeding upgrade

### 01. Run update program

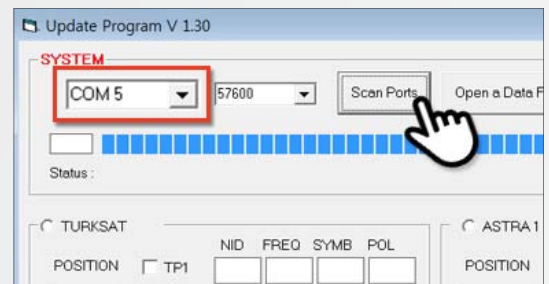
- ① Unzip downloaded [update program]
- ② Go to [Support] folder



- ③ Run [Update.exe]

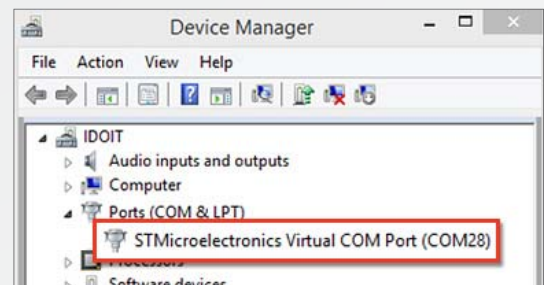
### 02. Turn on the controller and click [Scan Ports] (Port name may be different from example)

- ① If [Invalid port] message is not shown, skip and jump to # 04
- ② If [Invalid port] message is shown, follow #03 below to change to the other port

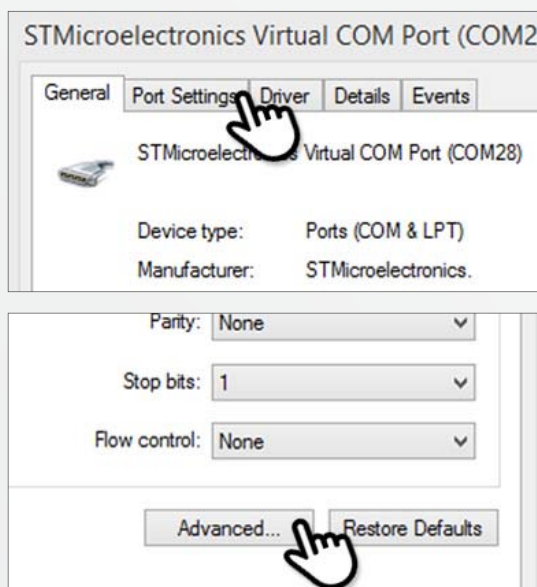


### 03. Change port

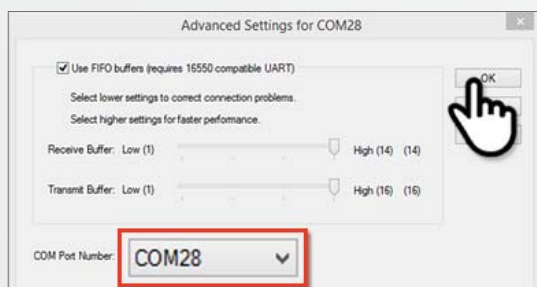
- ① Go to [Device manager] and right click [Ports]



- ② Go to [Port Settings] and click [Advanced...] button at the bottom

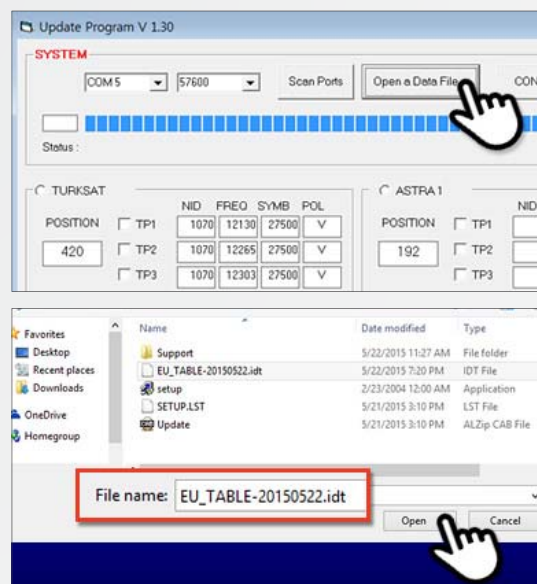


- ③ Change the COM port number as lower and select [OK]

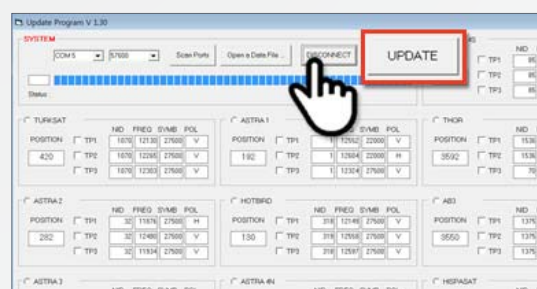


#### 04. Update satellite data

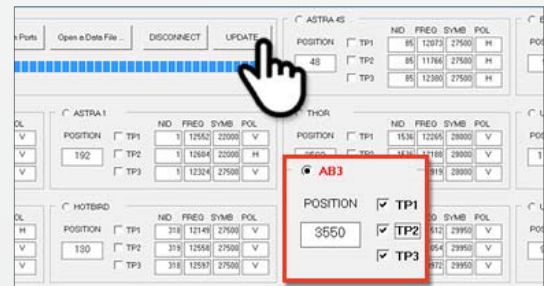
- ① Open the data file (\*.idt)  
(File name may be different from example image)



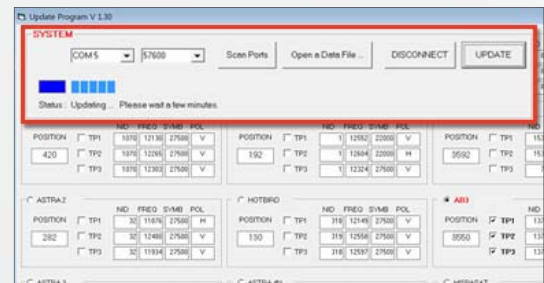
- ② Click [Connect] button and check [UPDATE] button becomes activated



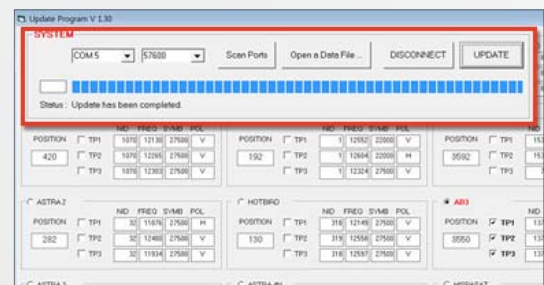
- ③ Check the satellite and TP to update, and click [UPDATE]  
 (At least 1 TP has to be selected and satellite data should be updated one by one)



- ④ The update process will be indicated as progress bar and GPS LED on the controller will be blinking while update  
 (If GPS LED does not blink, check [Antenna - Controller - PC] are correctly connected)



- ⑤ Check [Update has been completed]  
 (If controller power was disconnected or any of such things happened to stop the process while updating, please re-do the update process again)



05. If you would like to update other satellites too, please check the satellite you want and do the same

- ① Satellite data update can also be done manually by typing the values arbitrarily on the screen
- ② If you put incorrect data, ERROR message will be shown
- ③ Correct data has been written but if [Data Format ERROR] is still shown, please put different data or contact [service@selfsat.com](mailto:service@selfsat.com)

06. Lastly, connect the controller to the antenna and see the antenna searches the updated satellite properly



If the unit still cannot search satellites, please try upgrade process again or contact [service@selfsat.com](mailto:service@selfsat.com)





04. Download related programs

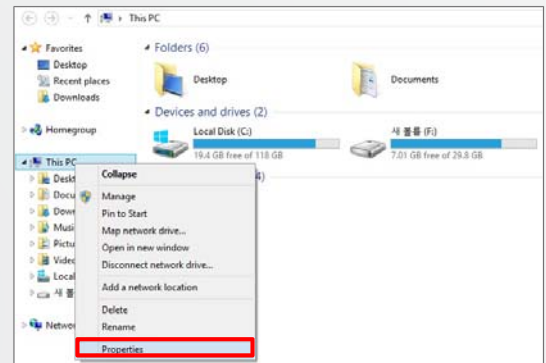
- [Upgrade program]
- [Satellite data]

Model	Upgrade file	Upgrade manual	Europe Satellite data
SNIFE	<a href="#">Download</a>	<a href="#">Download</a>	<a href="#">Download</a>
SNIFE PRO	<a href="#">Download</a>	<a href="#">Download</a>	<a href="#">Download</a>
SNIFE PRO MAX	<a href="#">Download</a>	<a href="#">Download</a>	<a href="#">Download</a>
SNIFE DOME	<a href="#">Download</a>	<a href="#">Download</a>	<a href="#">Download</a>
SNIFE2	<a href="#">Download</a>	<a href="#">Download</a>	
SNIFE AIR	<a href="#">Download</a>	<a href="#">Download</a>	
SNIFE DOME AIR	<a href="#">Download</a>	<a href="#">Download</a>	<a href="#">Download</a>
USB driver file	<a href="#">Download</a>		

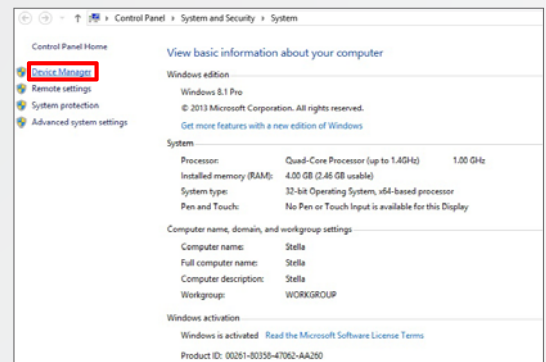
05. Activate USB drive port

① Turn on the controller and wait for a while during PC recognize new driver itself  
(In general, PC recognizes new device(USB) and installs driver automatically)

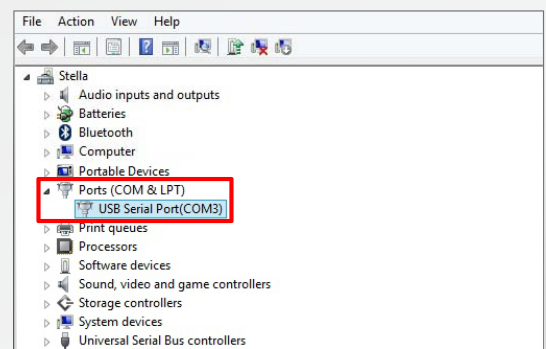
② Open and right click [My computer] and then go to [Properties]



③ Click [Device manager] (or Storage manager) on the left top



④ Click left button of [Port(COM & LPT)] to see subfolders



⑤ Check if [USB Serial Port] is activated

⑥ If [USB Serial Port] is not activated, follow (i) or (ii)

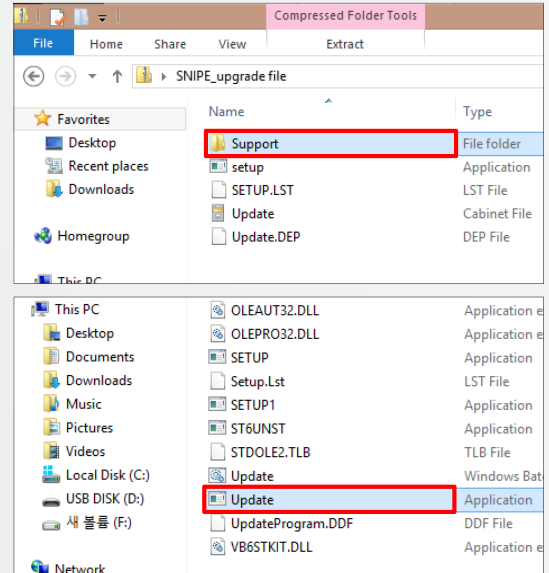
- i. Repeat to plug out USB cable and plug into PC till PC recognize USB properly  
(Reinforced security system of PC may block new USB)
- ii. Download and install [USB drive file] from website and repeat [05.①~⑤]

# 3

## Proceeding upgrade

### 01. Run update program

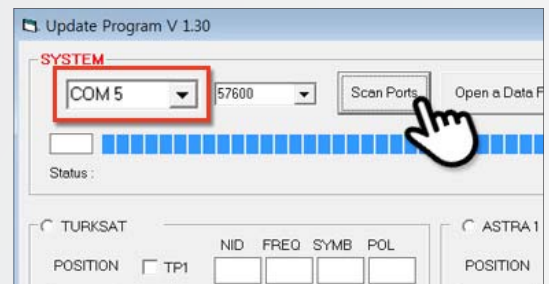
- ① Unzip downloaded [update program]
- ② Go to [Support] folder



- ③ Run [Update.exe]

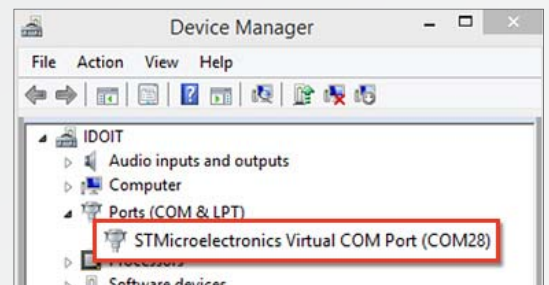
### 02. Turn on the controller and click [Scan Ports] (Port name may be different from example)

- ① If [Invalid port] message is not shown, skip and jump to # 04
- ② If [Invalid port] message is shown, follow #03 below to change to the other port

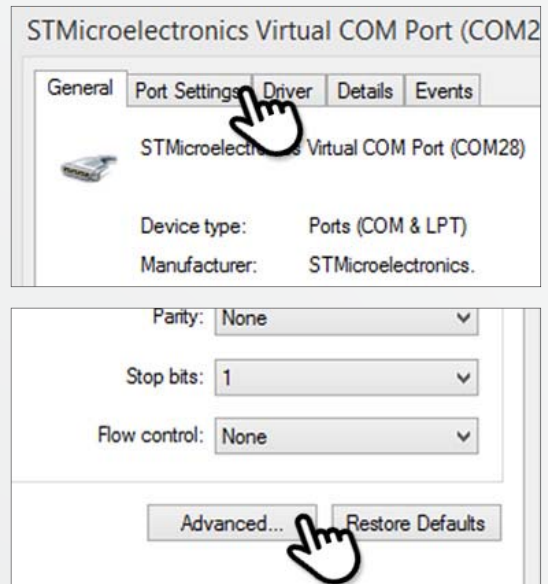


### 03. Change port

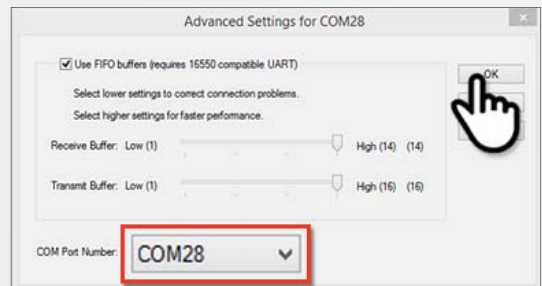
- ① Go to [Device manager] and right click [Ports]



- ② Go to [Port Settings] and click [Advanced...] button at the bottom

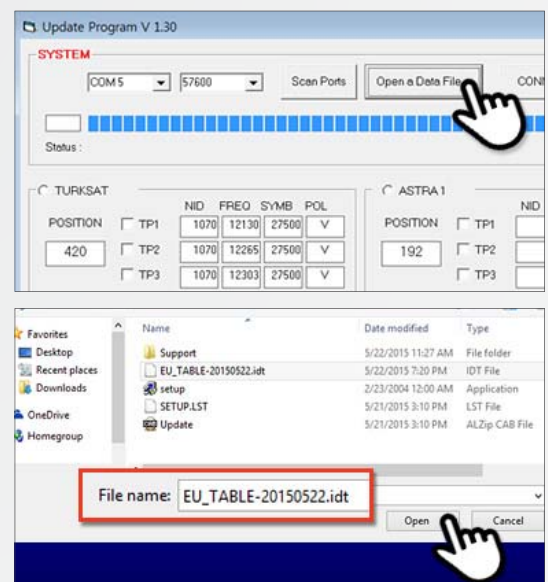


- ③ Change the COM port number as lower and select [OK]

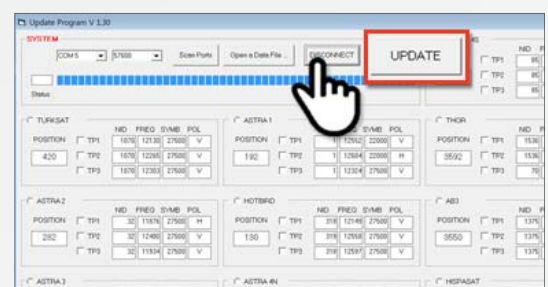


#### 04. Update satellite data

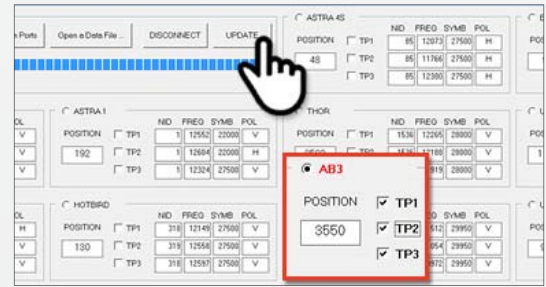
- ① Open the data file (\*.idt)  
(File name may be different from example image)



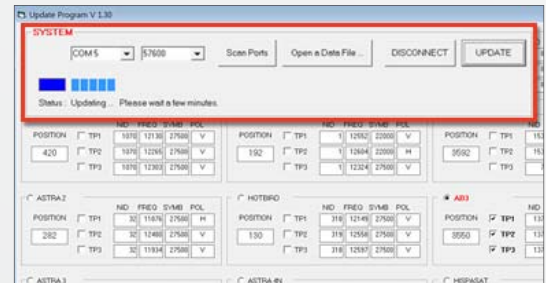
- ② Click [Connect] button and check [UPDATE] button becomes activated



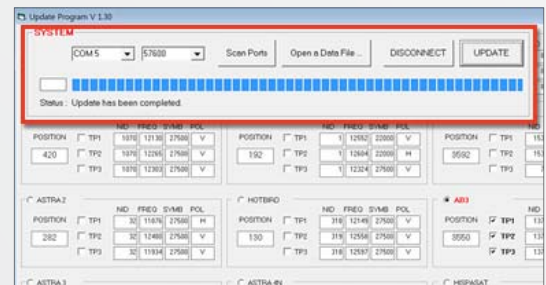
- ③ Check the satellite and TP to update, and click [UPDATE]  
(At least 1 TP has to be selected and satellite data should be updated one by one)



- ④ The update process will be indicated as progress bar and GPS LED on the controller will be blinking while update  
(If GPS LED does not blink, check [Antenna - Controller - PC] are correctly connected)



- ⑤ Check [Update has been completed]  
(If controller power was disconnected or any of such things happened to stop the process while updating, please re-do the update process again)



05. If you would like to update other satellites too, please check the satellite you want and do the same

- ① Satellite data update can also be done manually by typing the values arbitrarily on the screen
- ② If you put incorrect data, ERROR message will be shown
- ③ Correct data has been written but if [Data Format ERROR] is still shown, please put different data or contact [service@selfsat.com](mailto:service@selfsat.com)

06. Lastly, connect the controller to the antenna and see the antenna searches the updated satellite properly



**If the unit still cannot search satellites, please try upgrade process again or contact [service@selfsat.com](mailto:service@selfsat.com)**

**NOTE**  
Please read this upgrade manual thoughtfully before preceding the upgrade process.

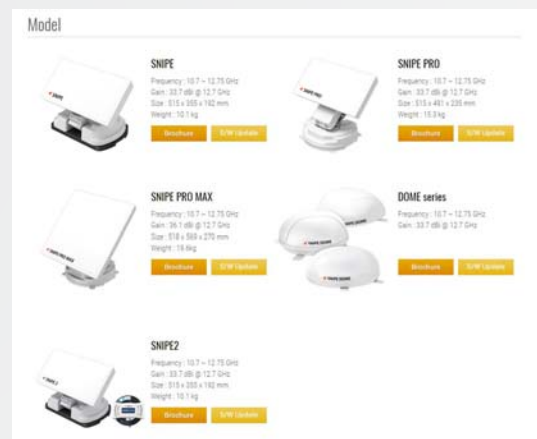
## 1 Prepare a USB

\* CBI type USB is not supported

01. Plug a USB into a PC and right click plugged USB folder
02. Go to "Properties" to check if "File system" is "FAT32"
03. If not, right click "USB folder" again and go to "Format"
04. Select "FAT32" at file system category and then apply with "Start" button

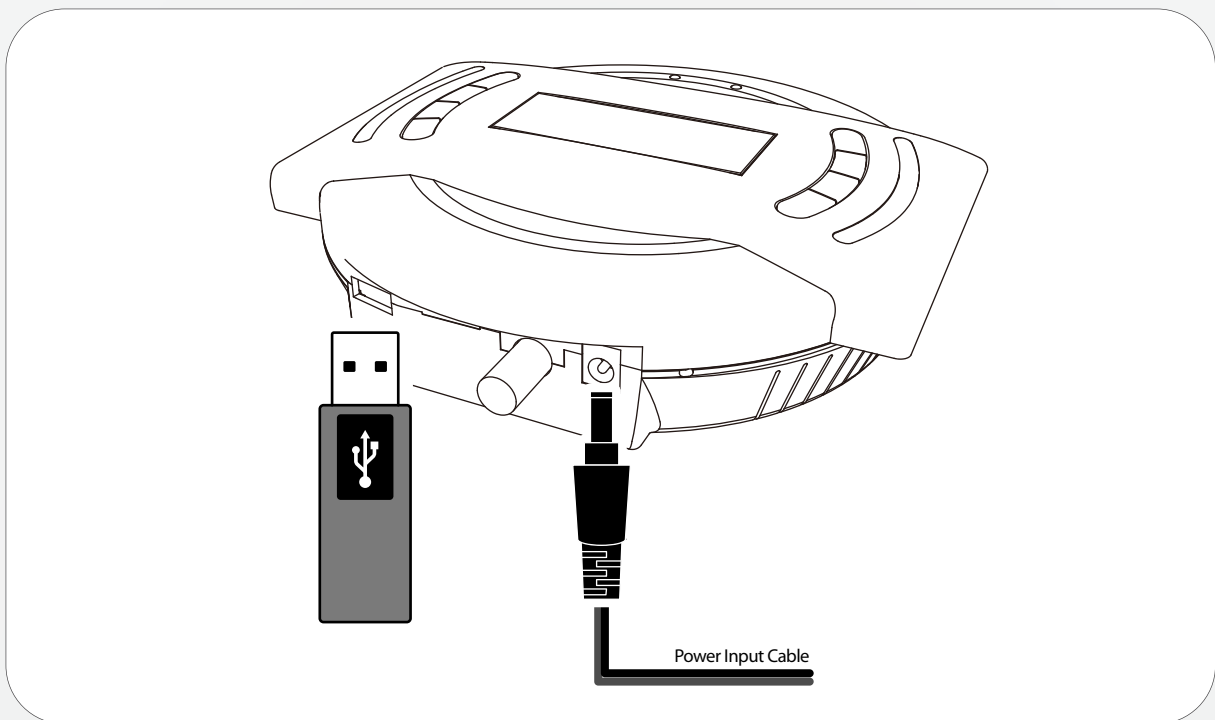
## 2 Download the upgrade program

01. Visit SELFSAT website (<http://www.selfsat.com>) and click SNIPE category at main page
02. Scroll down to the bottom to find upgrade chapter
03. Click [S/W upgrade] of the model
04. Download [Upgrade program]



Model	Upgrade file	Upgrade manual	Europe Satellite data
SNIPE	<a href="#">Download</a>	<a href="#">Download</a>	<a href="#">Download</a>
SNIPE PRO	<a href="#">Download</a>	<a href="#">Download</a>	<a href="#">Download</a>
SNIPE PRO MAX	<a href="#">Download</a>	<a href="#">Download</a>	<a href="#">Download</a>
SNIPE DOME	<a href="#">Download</a>	<a href="#">Download</a>	<a href="#">Download</a>
SNIPE2	<a href="#">Download</a>	<a href="#">Download</a>	
SNIPE AIR	<a href="#">Download</a>	<a href="#">Download</a>	
SNIPE DOME AIR	<a href="#">Download</a>	<a href="#">Download</a>	<a href="#">Download</a>
USB driver file	<a href="#">Download</a>		

05. Unzip downloaded upgrade program
06. Copy "FWUPDATE.BIN" file and paste into the USB root folder(not belong to the other folder)



※ To upgrade firmware, only controller with power is required. Disconnection the controller from the antenna unit is recommended.

01. Prepare and make sure the controller is being turned off before upgrade process is started
02. Plug the USB into USB port on the side of controller
03. Press and hold [TUNE + POWER] buttons together to turn on (If POWER button is pressed first, upgrade mode will not be started)
04. The controller is in upgrade mode and "USB connected, F/W Upgrade Mode" is shown on LCD
05. Upgrade process takes no less than 5 seconds
06. "Upgrade Finished\_SET\_OK" is shown when the process is completed
07. Lastly, connect the controller to the unit and see it searches the upgraded satellite properly



If the unit still cannot search satellites, please try upgrade process again or contact [service@selfsat.com](mailto:service@selfsat.com)



[www.selfsat.com](http://www.selfsat.com)

**I DO IT Co., Ltd.**

#637, Smart-Hub Industry-University Convergence Center,  
237 Sangidaehak-ro, Siheung-si, Gyeonggi-do, Korea

Tel : +82 (0)31 8041 1500

Fax : +82 (0)31 8041 1550

E-mail : [sales@selfsat.com](mailto:sales@selfsat.com)

**I DO IT France**

CE4819 6-8Rue de la Closerie ZAC Du Clos Aux Pois91090  
LISSES Cedex

Tel : +33 (0)1 64 97 52 28

Fax : +33 (0)1 64 97 52 35

E-mail : [sales@selfsat.com](mailto:sales@selfsat.com)